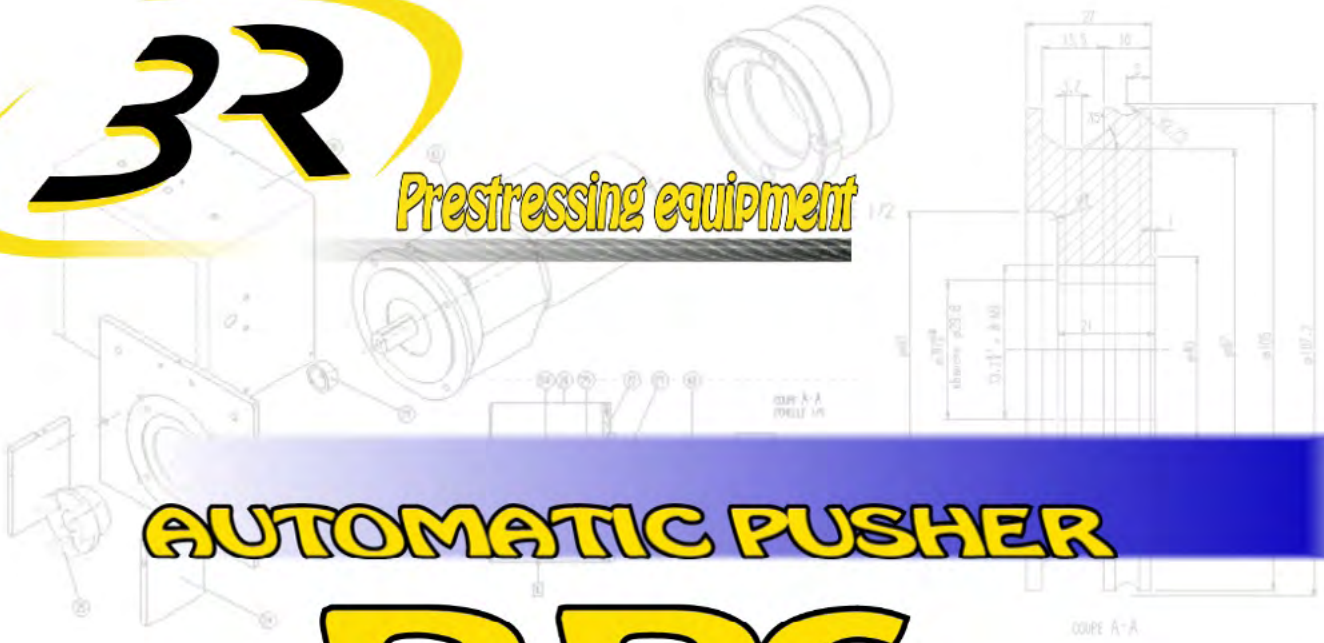




Prestressing equipment

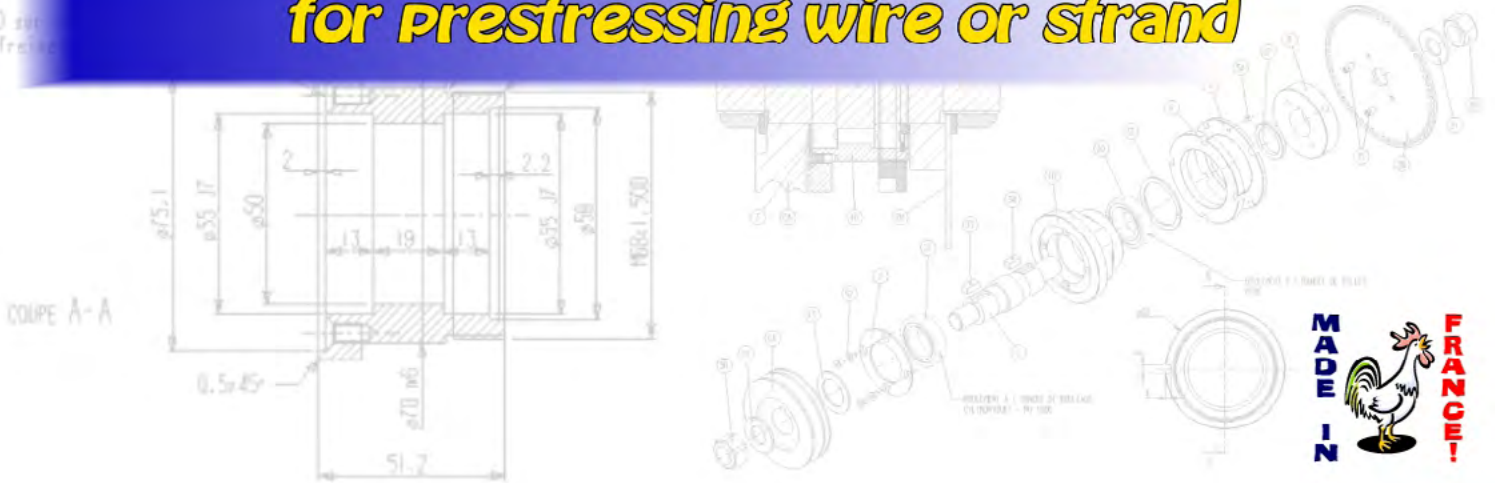


**AUTOMATIC PUSHER**

**RP6**



**Automatic unwinding machine  
for prestressing wire or strand**



# AUTOMATIC PUSHER RP6



**Prestressing equipment**

Specialising for more than 30 years, in the production of machineries for the precast industry, 3R has delivered more than 300 pushers around the world. Our machines are installed in 90% of the french precast factories and, everyday, more than 3000 kilometers of steel are unwound by our pushers !

## THE PRINCIPLE :

After the coil, the wire goes through the driving unit, which is equipped with 3 pairs of motorised rollers and then pushed through the guiding channel. A hydraulic cutter is located between the pusher and the guiding channel. All these components are driven by a PLC, which runs the full automatic cycle .

Working cycle as follow:

- Programming the requested number of wires
- Launch the automatic cycle - Push - Stop - Cut - Open of the channel
- Ejection - Closing of the channel - Automatic start of a new cycle

The pusher is working automatically and does not require any operator intervention.

The length accuracy is  $\pm 3$ cm and the HD version can push up to 200 meters



*Fixed pusher RP6 EMA*



*Patented guiding channel*



*Hydraulic cutter 140 kN*

# The options :

## MOBILE PUSHER EMO type

There are two families of pushers :  
fixed (EMA type) or mobile (EMO type).

The fixed pusher EMA comprises of a  
pushing unit with only one guiding channel.

The mobile RP6 EMO will feed several guiding  
channels (for example one in every production hall).

A bed-recognition system allows for easy and quick connection.



Mobile pusher RP6 EMO



Motorized unit 2.2 kW

## SPEED

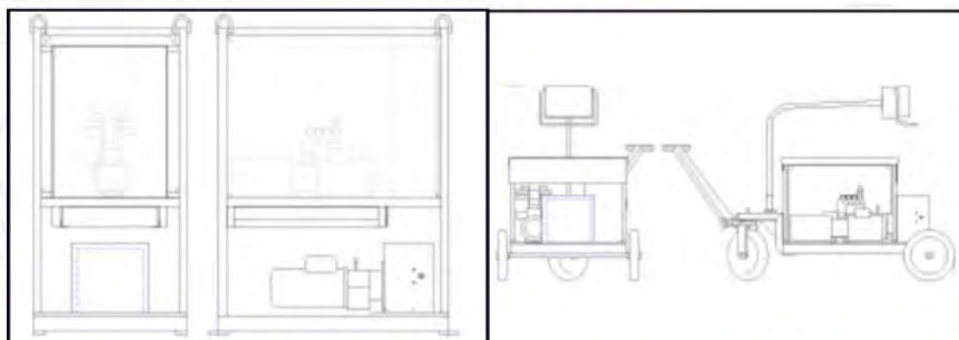
To suit your requirements in wires and the length of your  
beds, we propose 3 types of motorisation (2.2 kW = 60 m / mn,  
5.5 kW = 120 m / mn, 7.5 kW = 200 m / mn)

## COLLECTING RACK RS type

Thanks to a row of hydraulically driven  
arms, the machine is able to drop the wires in 2 or 3 collecting  
racks. Each rack can receive either a certain kind of wire or the  
specific quantity of wires dedicated to one specific bed



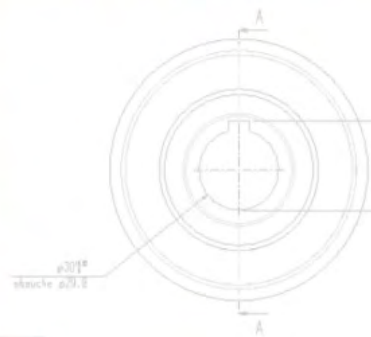
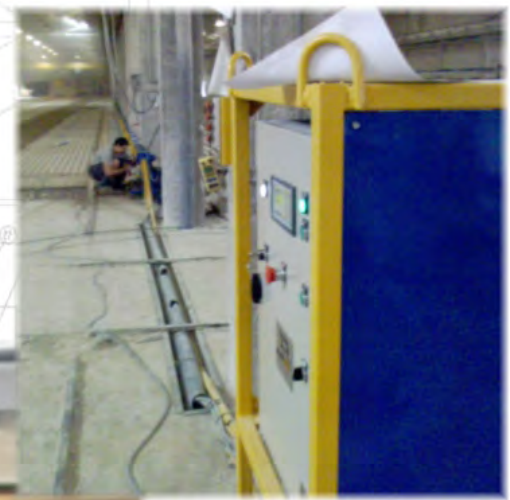
Sorter RS2



Type	EMA / 60	EMA / 120	EMA / HD	EMO / 60	EMO / 120	EMO / HD
Frame	Fixed			Mobile		
Motor power	2.2 kW	5.5 kW	7.5 kW	2.2 kW	5.5 kW	7.5 kW
Maximum speed	60 m. / mn	120 m. / mn	200 m. / mn	60 m. / mn	120 m. / mn	200 m. / mn
Maximum length of guiding channel	70 m.	130 m.	200 m.	70 m.	130 m.	200 m.
Dimensions (H x L x P) mm	1526 x 1150 x 1818			1670 x 800 x 1300		

Please contact us for specific adaptation to your requirements

RP6 pushers are available with a variety of layout options :  
opening to the right, or left, along a wall, outside, in height, near the floor and even in a side trench !



Our agent :



RECHERCHES & REALISATIONS REMY S.A.  
Zone Industrielle Nord - 1, Rue Jacquard  
82000 Montauban - France  
Tel : 05-63-66-52-80 Fax 05-63-66-52-71  
contact.commercial@3r-rpp.com

